

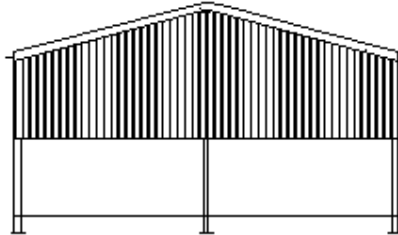
# FOURSQUARE FARM BUILDINGS

9A RALEIGH HALL ECCLESHALL STAFFS ST21 6JL 01785 851618 FAX 01785 851624

[OFFICE@FARMBUILDINGS.INFO](mailto:OFFICE@FARMBUILDINGS.INFO)

[WWW.FARMBUILDINGS.INFO](http://WWW.FARMBUILDINGS.INFO)

## Sterling Range: The Classic Farm Shed.



The '**Sterling**' is designed to be a flexible general purpose farm building suitable for livestock, workshops, machinery and storage.

Available in 30', 35', 40', 45' and 50' spans, the base building is 60' long in four 15' bays and includes a fibre cement roof with rooflights, 7"X3" treated timber purlins and 6" 'Hunter' brand StormFlow gutters and downpipes plus all the bolts and tek screw roof fixings you need.

The sturdy steel frames have properly haunched and gusseted connections and include roof and side bracing. Purlin cleats are fabricated from 8mm angle to provide proper seating for the timber and set at maximum 4'6" spacings. Baseplates are minimum 10mm thick (12mm above 40' spans) and punched to accept foundation bolts (included in the kit). The steelwork can be supplied either painted with a high build rust resistant primer or Galvanised.

In all cases the posts are designed to be bolted on a foundation base 18" (450mm) below floor level and have an overall length approximately 13'6" (4725mm).

There is a wide selection of side cladding options available in either plastisol coated steel or yorkshire boarding on a "Pick & Mix" basis, additionally if you prefer to supply your own vertical cladding you can order the necessary gable and door posts separately. Our prices for gable cladding include the necessary steelwork and rails as a package – you do not need to order the steelwork as well.

Please note that the base building does not include side cladding to the gable peaks because we have found that many of our customers intend to fit side cladding later and matching the existing peaks is inconvenient. Almost invariably the cladding is thrown away and replaced which is a waste of time and money. If you intend to clad the building later we would suggest that you purchase additional gable posts with the kit.

If you need a building longer than 60' then extra bay kits are available which include an extra portal frame, purlins, roof cladding, rainwater goods and fixings.

# FOURSQUARE FARM BUILDINGS

WWW.FARMBUILDINGS.INFO

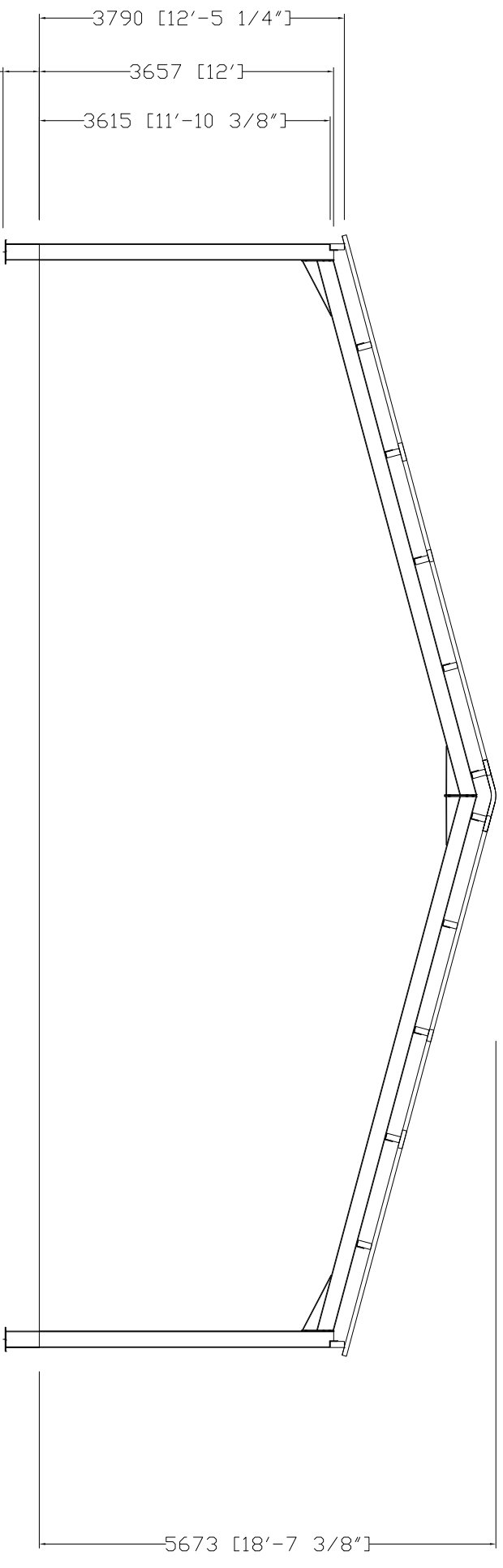
## Sterling 45 Specification Sheet

Issued 03-12-09

Overall Span	45'	13716mm
Overall Length	60'	18288mm
Height from Floor to Top of Steel	12'	3658mm
Height from Floor to Top of Eaves Beam	12' 5 1/4"	3790mm
Depth from Floor to Top of Concrete inc. pack	1'6"	450mm
Overall Length of Post inc. pack	13'6"	4115mm
Roof Pitch	15 degrees	
Height to Apex	18' 7 3/8"	5673mm
Clear Height Under Eaves Beam	11' 10 3/8"	3615mm
Floor Area	2700 sq ft	252.3 sq m
Column Section	8"x 5 1/4"x16.75 lb/ft UB	203x133x25 kg/m UB
Rafter Section	8"x 5 1/4"x16.75 lb/ft UB	203x133x25 kg/m UB
Roof Bracing	3" OD Tube	76mm OD Tube
Side bracing	2"x2" Angle	50x50 Angle
Roof material	Fibre Cement Natural grey	
Ridge Type	Ventilating or Closed or Alternating	
No. of Rooflights	16	
Barge Boards	Fibre Cement Natural grey	
Purlins	7"x3" Treated Timber	175x75mm
Roof fixings	Top Fix Self drilling Screws	
Main connection Bolts	M16 High Tensile Zinc Plated	
Rainwater Goods	Hunter 6" Half Round PVC Black	
Side Cladding	Optional	

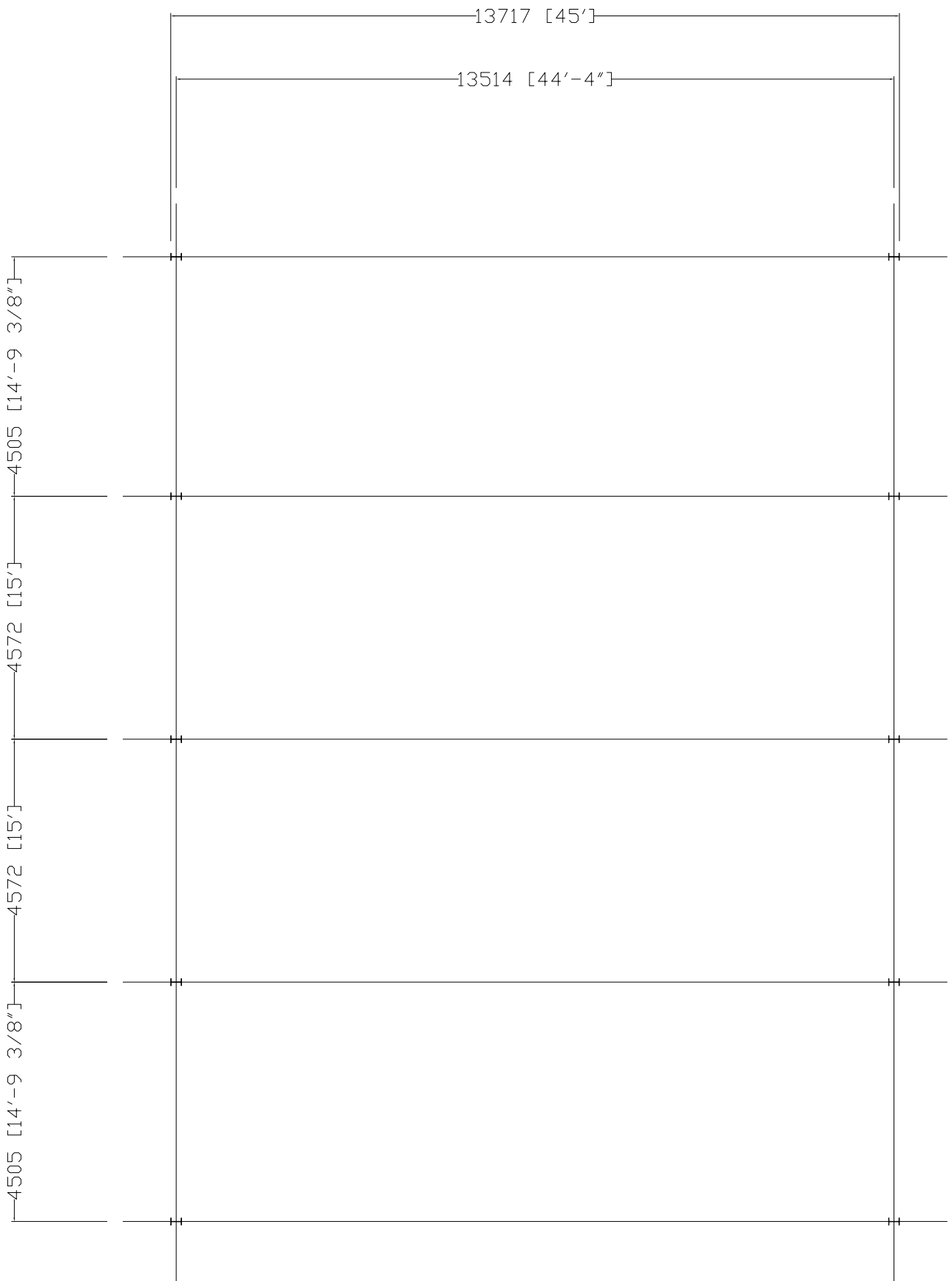
9A RALEIGH HALL INDUSTRIAL ESTATE ECCLESHALL STAFFS ST21 6JL

TELEPHONE 01785 851618 - 01785 851811- 01785 851941- FAX 01785 851624



FOUR SQUARE FARM BUILDINGS 01785 851618

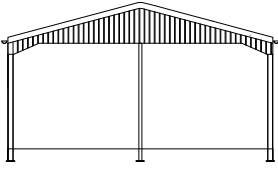
Title	Sterling 45 Section		
Client/Project	Sterling 45 building		
Drwg Ref	Revision	Date	Scale



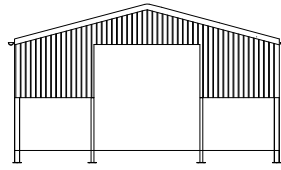
FOURSQUARE FARM BUILDINGS 01785 851618			
Title	Sterling 45 Steel Layout		
Client/Project	Sterling 45 building	Date	
Drg Ref		Revision	Scale

# STERLING BUILDING RANGE GABLE CLADDING OPTIONS 45' & 50' SPANS

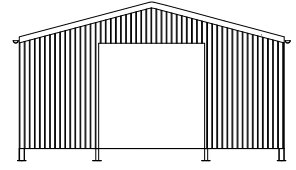
## YORKSHIRE BOARDING



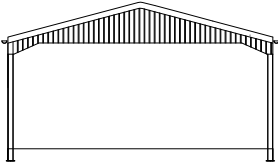
Code YB-PGP



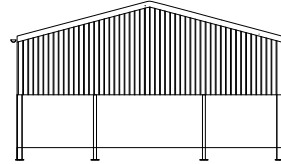
Code YB-6D



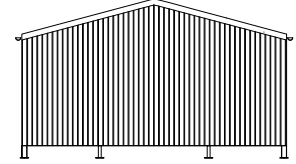
Code YB-12D



Code YB-PH

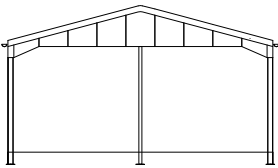


Code YB-6GP

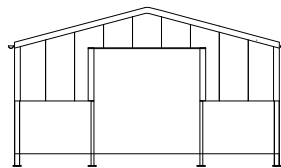


Code YB-12GP

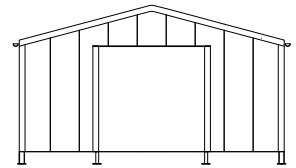
## PLASTISOL COATED STEEL



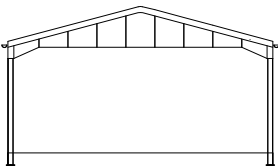
Code BP-PGP



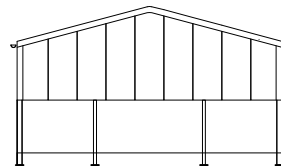
Code BP-6D



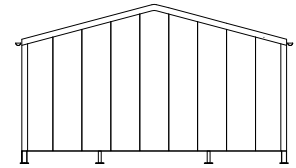
Code BP-12D



Code BP-PH

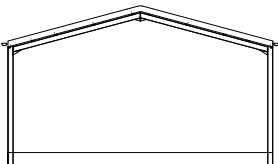


Code BP-6GP

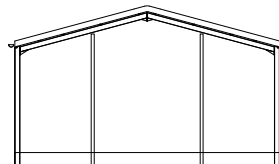


Code BP-12GP

## NO CLADDING



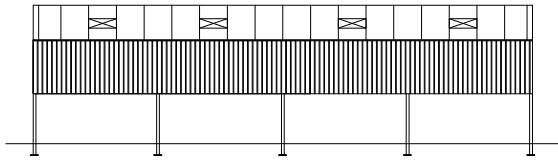
Code 0



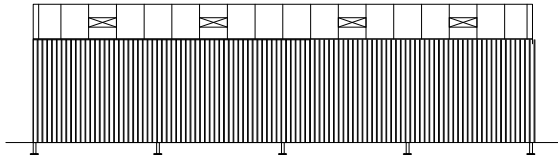
Code 0D

# STERLING BUILDING RANGE SIDE CLADDING OPTIONS

## YORKSHIRE BOARDING

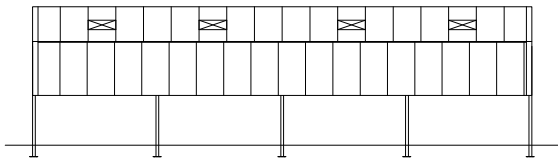


Code YB-6S

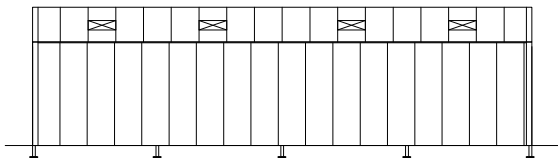


Code YB-12S

## PLASTISOL COATED STEEL

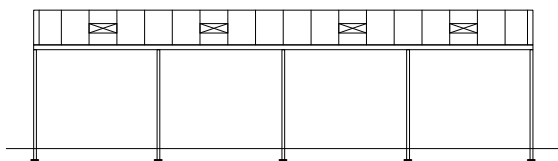


Code BP-6S



Code BP-12S

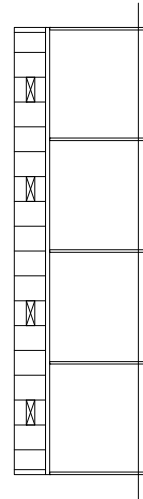
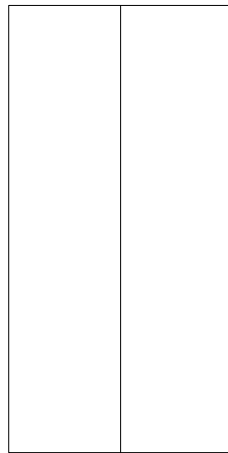
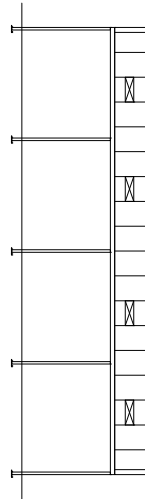
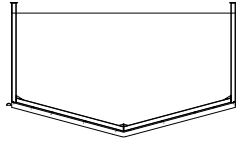
## NO CLADDING



Code 0-S

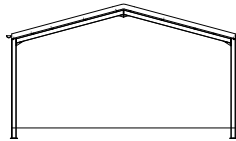
# STERLING RANGE

GABLE 2	
Code	



SIDE 1	
Code	

SIDE 2	
Code	



GABLE 1	
Code	

BUILDING SPAN (30,35,40,45 OR 50)	SPAN	
EXTRA BAYS	QTY	
EXTRA BAYS SIDE CLADDING SIDE 1	QTY	
EXTRA BAYS SIDE CLADDING SIDE 2	QTY	

FOURSQUARE FARM BUILDINGS ORDER FORM 01785 851618

Name			
Address			
Telephone			Date